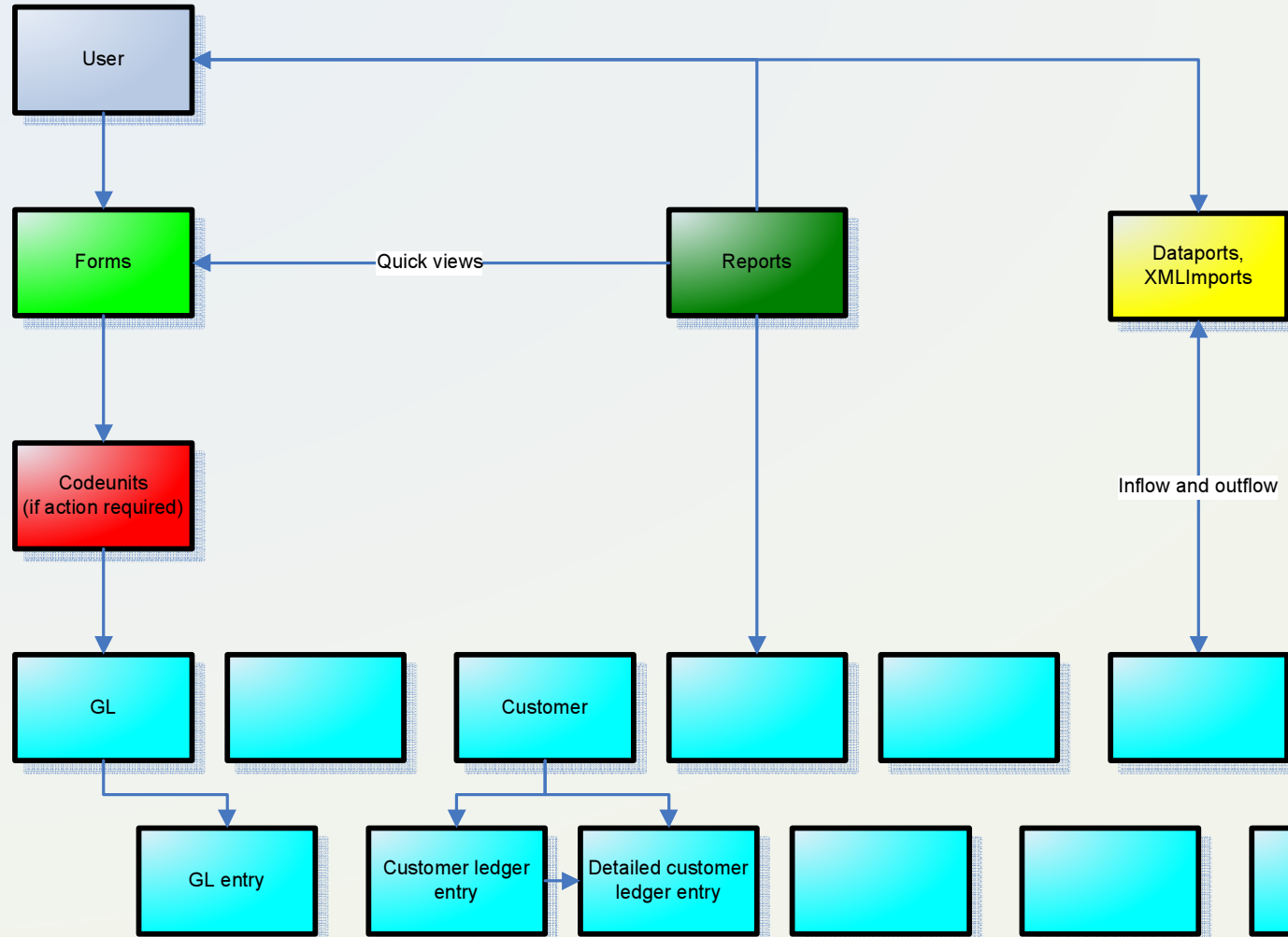
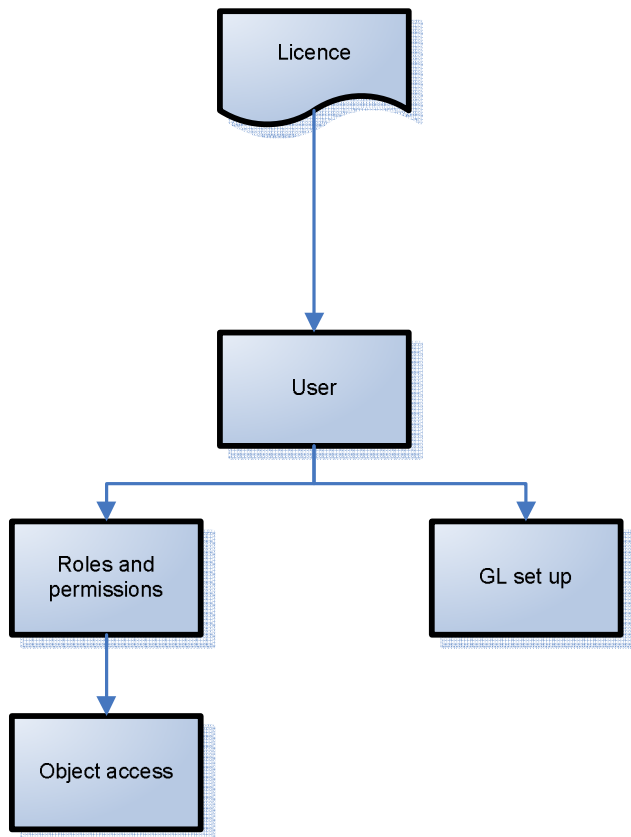


Navision database: explanation of relationship between objects

Navision database (1 database, all objects applied to database, multiple businesses, same objects)



Database access defined



The Navision licence acquired defined what modules and menus within modules can be seen.

Each user assigned a number of roles. Roles define restrictions via objects using read, write, insert, delete.

GL User set up assigned **further** restrictions to access. Used for allowing access to table but restricting access